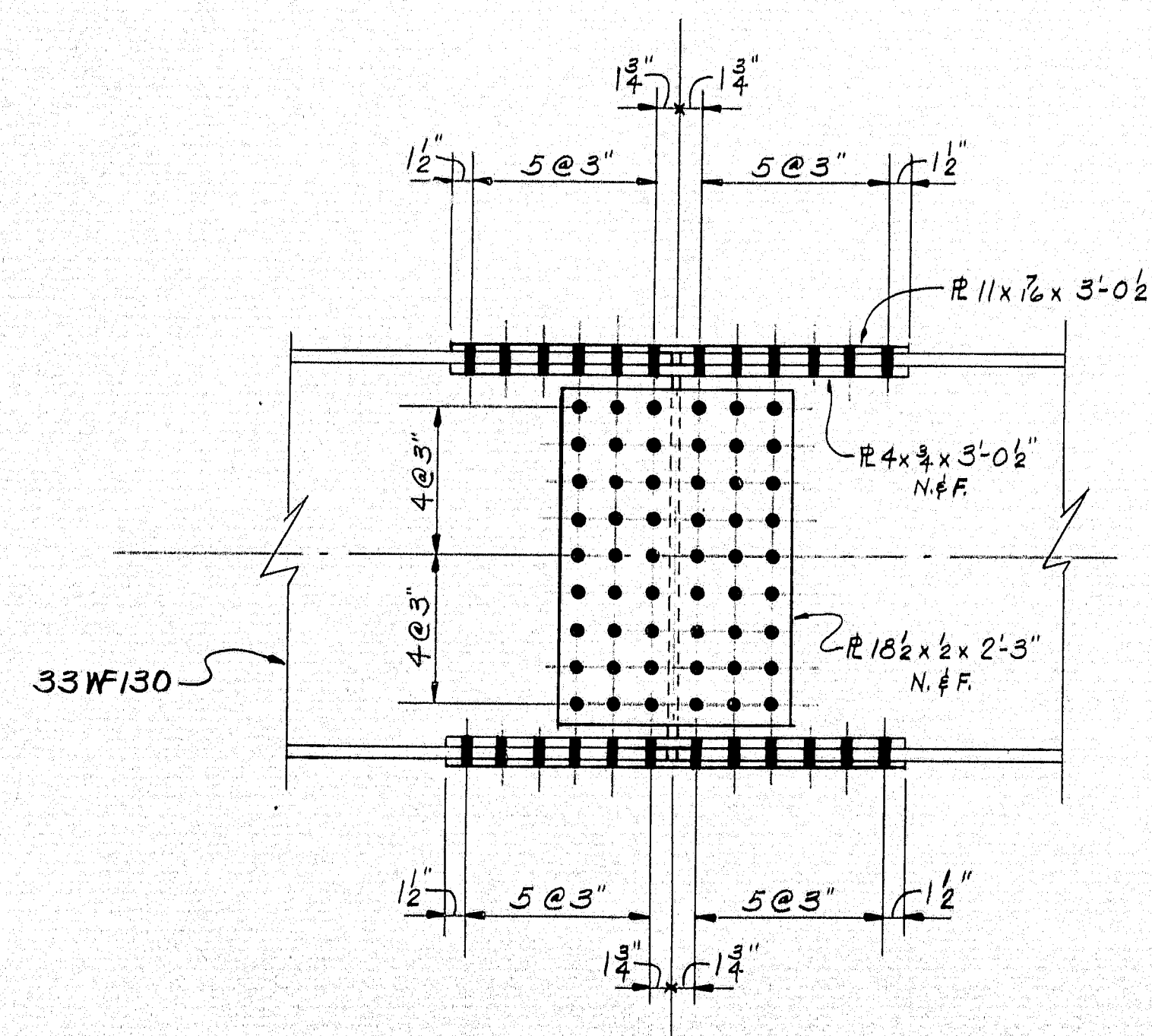
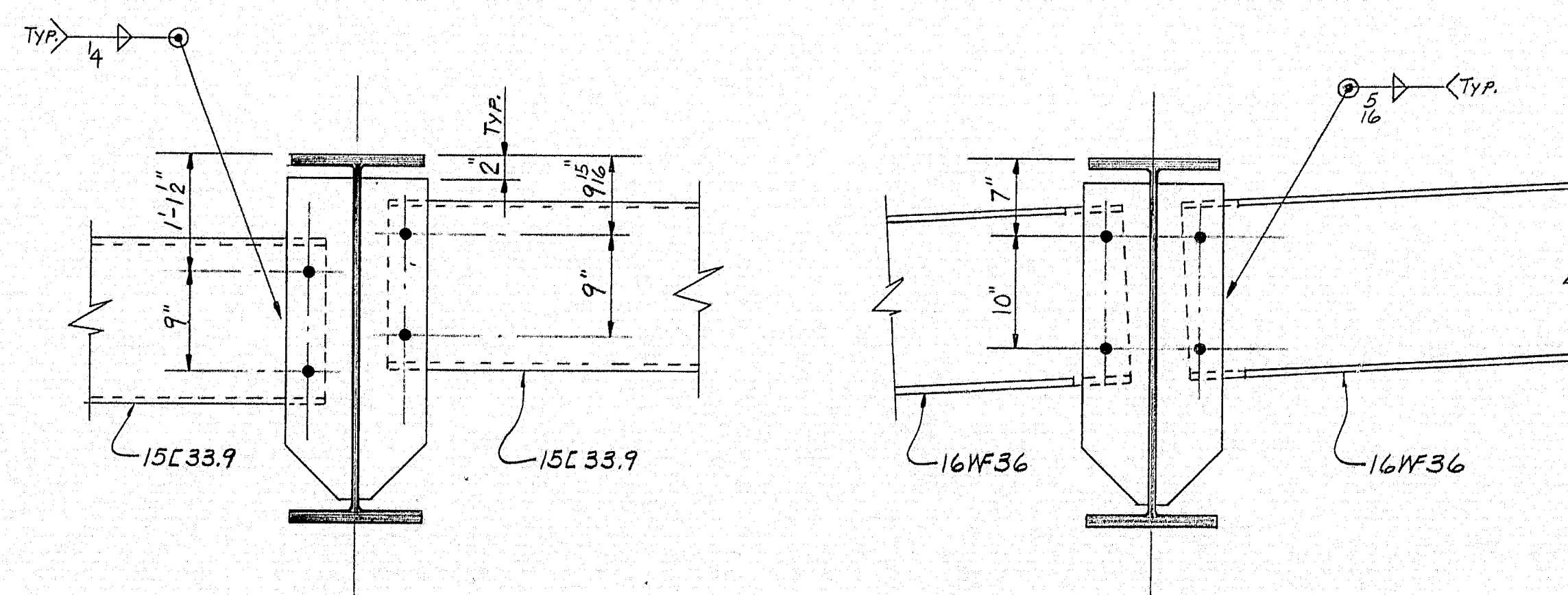


FRAMING PLAN



SPICE DETAIL



DIAPHRAGM DETAILS

All Structural Steel shall conform to the latest revision of the specification A.S.T.M. A36 unless noted on standards details.

Bolts for splices shall be ASTM A325 7/8" heavy hexagon structural bolts with heavy semi-finished hexagon nuts and one hardened washer.

Holes in stringers are for high strength bolts, they are to be free from burrs, there shall be no paint with in three inches from such holes.

Sub punch or drill 11/16": reame assembled (not with template) parts to be connected in field to 15/16" or drill from solid.

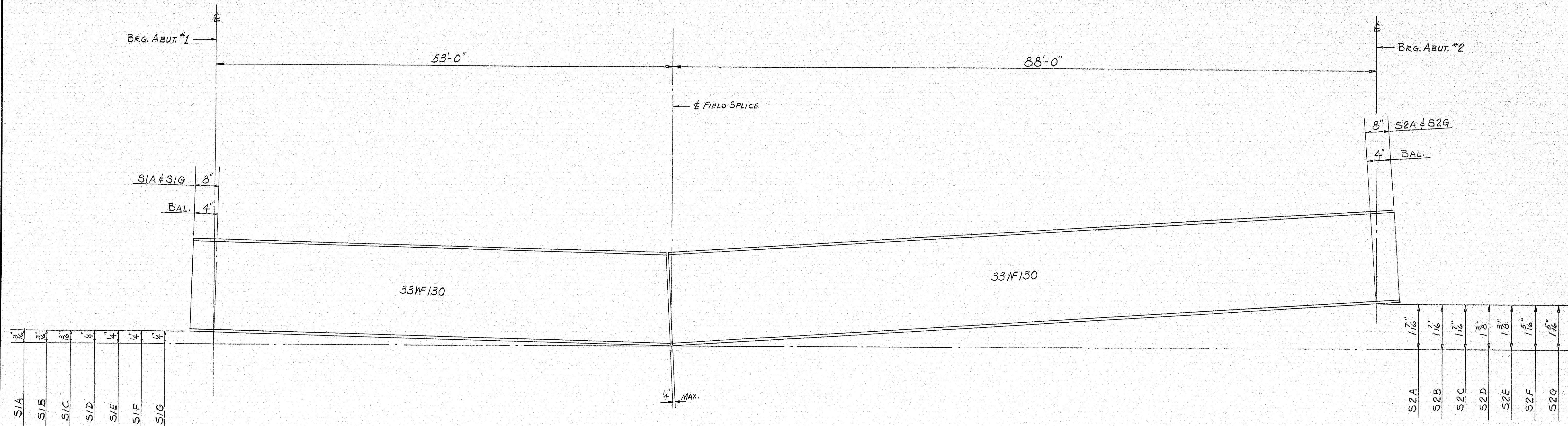
Match mark all connecting parts before disassembling and supply Engineer with a diagram showing match marks.

Fabricate and erect in accordance with M.S.H.O. standard specifications.

SHOP CONNECTIONS: WELD
FIELD CONNECTIONS: BOLT
HOLES: AS NOTED
PAINT: STATE OF MAINE SPEC'S.

APP. 4-27-66		Proj. No. I-95-9(37) 272	
		FRAMING PLAN	
		Bancroft & Martin Inc.	
		Brewer, Maine	
		I-95 OVER W. BRANCH MATTAHANKEAG RIVER	
		ISLAND FALLS, MAINE	
		CUSTOMER REED & REED	
		DESIGNER M.S.H.C.	
		ORDER VERBAL	
		DWG. B66-71-E1	

97-161



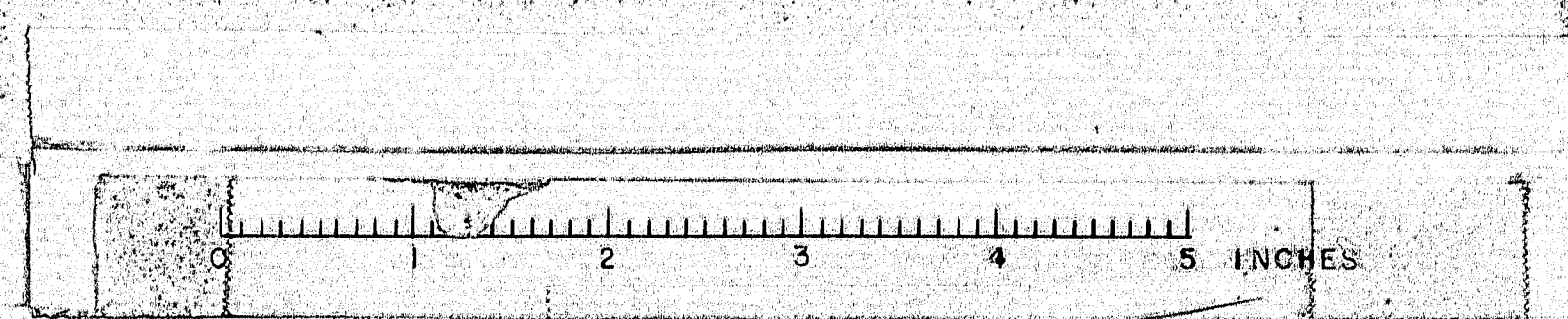
ELEVATIONS

SHOP CONNECTIONS: —
FIELD CONNECTIONS: —
HOLES: —
PAINT: —

APP 4-27-66 Proj. No. I-95-9(37)272

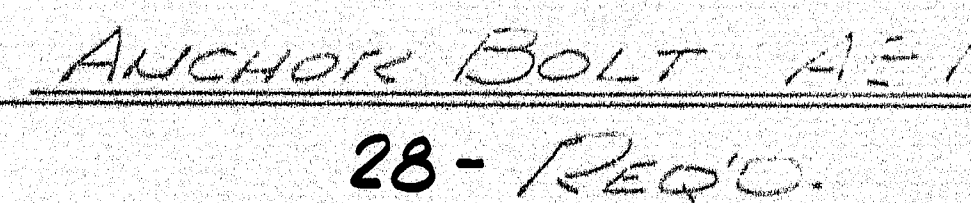
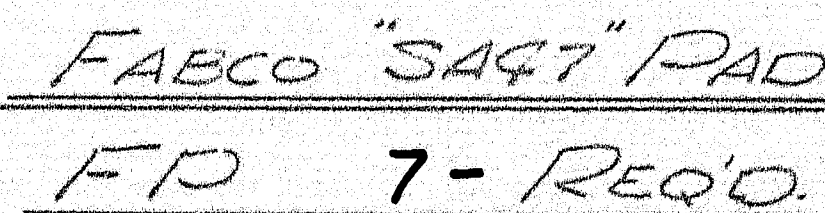
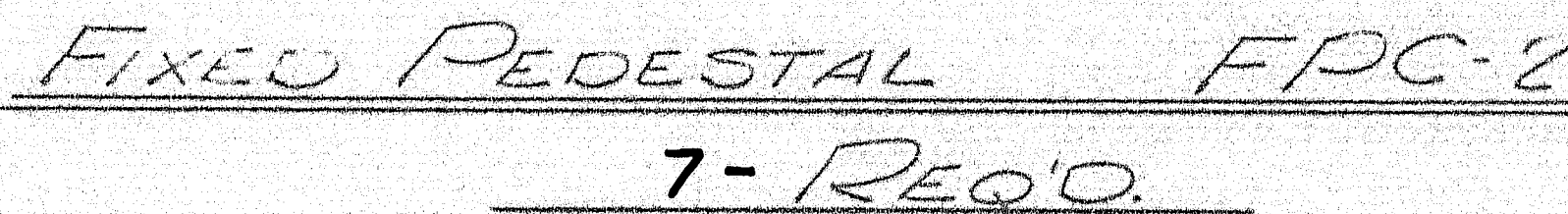
PRINT ISSUE			ELEVATIONS	
3	CUST.	7-12-66	Pancroft & Martin Inc. Brewer, Maine I-95 OVER W. BRANCH MATTAWAMKEAG RIVER ISLAND FALLS, MAINE CUSTOMER REED & REED DESIGNER M.S.H.C. ORDER VERBAL DWG B66-71-E2	
3	SHOP	7-7-66		
5	S.H.C.	4-27-66		
3	CUST.	4-27-66		
3	SHOP	4-27-66		
3	F.A.	4-18-66		
DRAWN	4-12-66	C.J.M.		
REVISION				
REVISION				
REVISION				

97-162

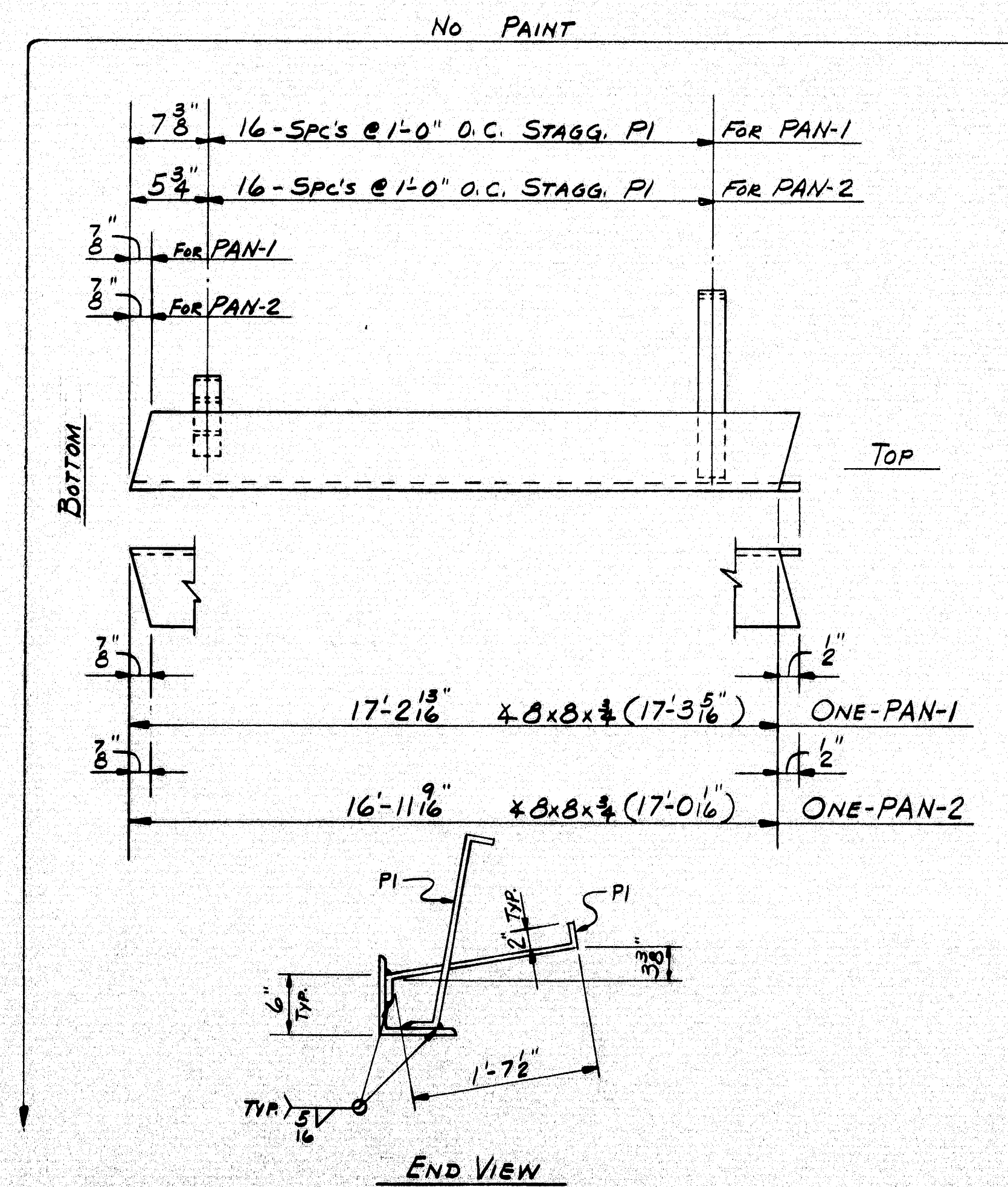
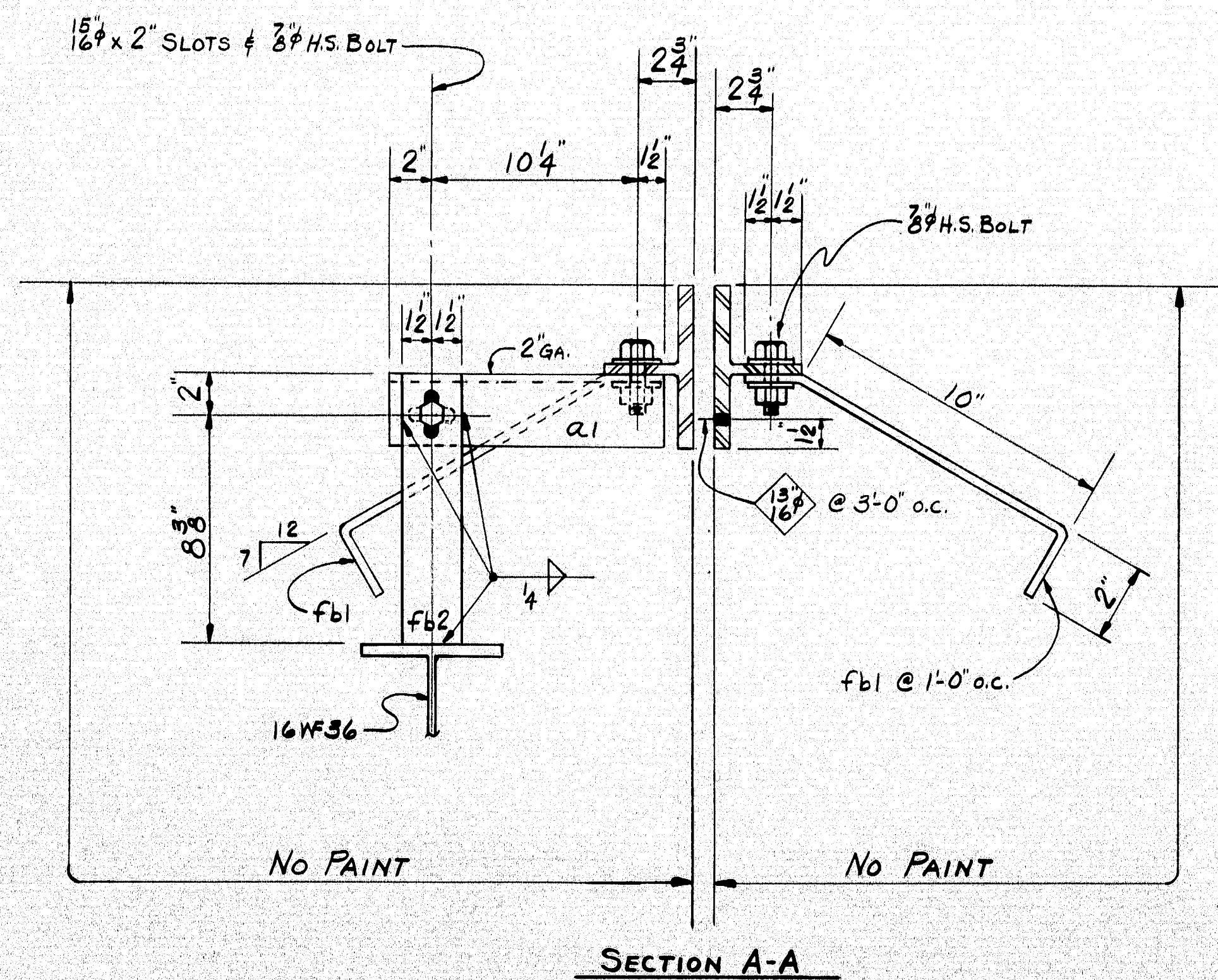
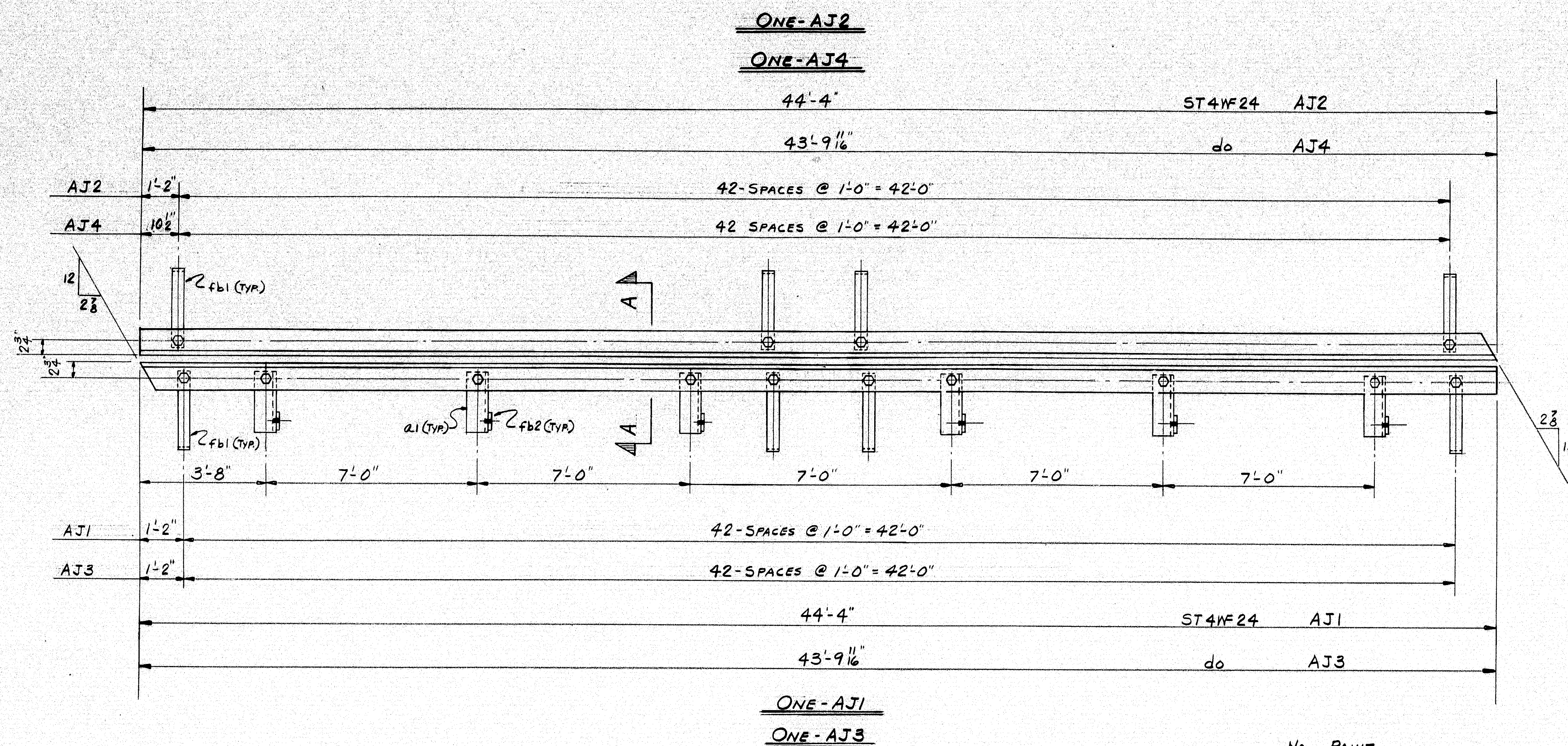


97-163

97-164



100



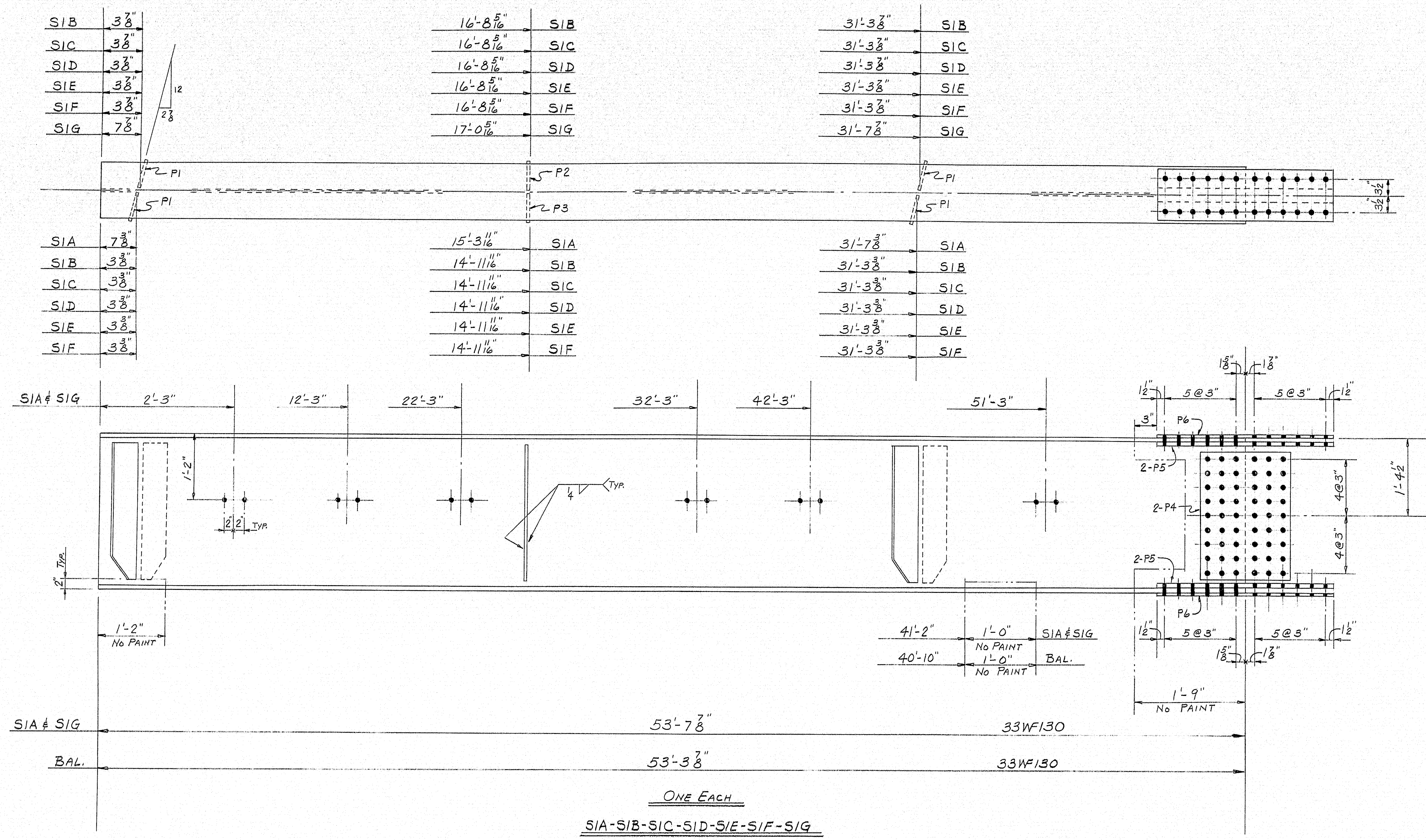
SHIP		BILL OF MATERIAL				DWG. B66-71-S4
MARK	NO.	MARK	SHAPE	LENGTH	WT.	REMARKS
AJ1	1		ST4WF24	44' 4"		
AJ2	1			44' 4"		
AJ3	1			43' 9 1/16"		
AJ4	1		do	43' 9 1/16"		
	12	a1	3/8 x 3 1/2 x 3/4	1' 3/4"		
	172	fb1	FB 2 1/2 x 3/4	1' 3"		BENT
	12	fb2	FB 5/8 x 3/4	0' 10 3/8"		
	196	SHOP	3/8 H.S. BOLTS	0' 24"		
	196	SHOP	3/8 H.S. WASHERS			
PAN-1	1		8x8x3/4	17' 3 1/8"		FOR PIER #1 (COR-TEN)
PAN-2	1		do	17' 0 1/8"		FOR PIER #2 (COR-TEN)
	34	PI	FB 2 3/4 x 1/2	2' 0"		

SHOP CONNECTIONS: 3/8" H.S. BOLT & WELD
FIELD CONNECTIONS: WELD
HOLES: 15/16" U.N.
PAINT: STATE OF MAINE SPEC'S.

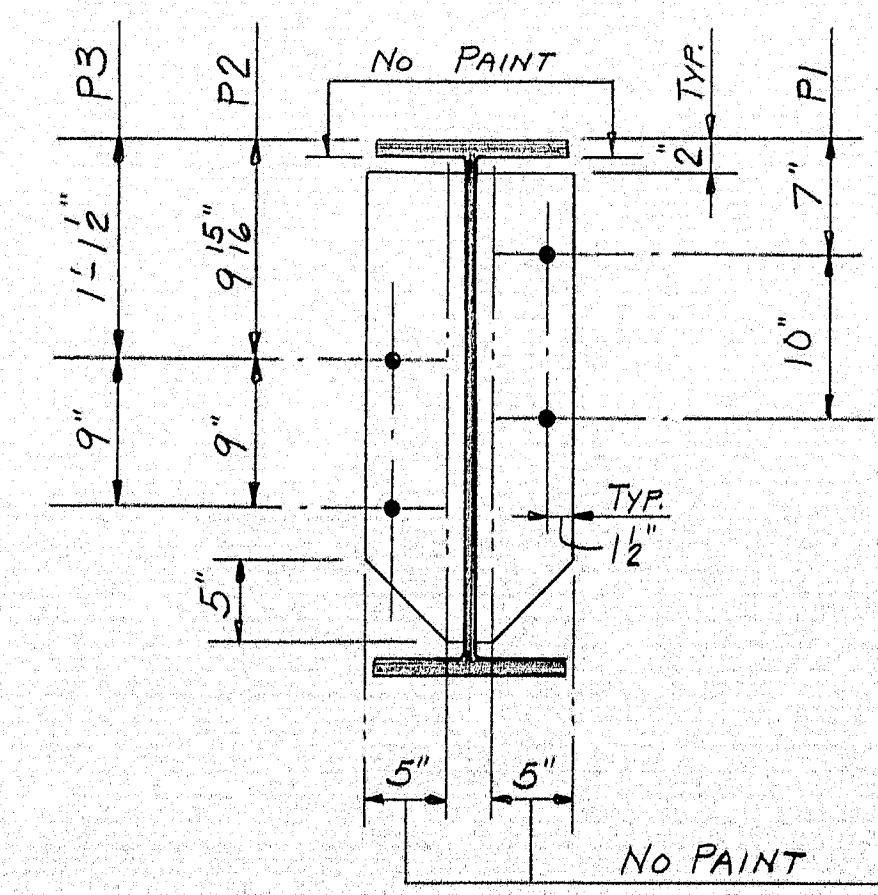
Proj. No. I-95-9(37)272

PRINT ISSUE			ARMORED JOINT & PIER ANGLE NOSING	
			Bancroft & Martin Inc.	
			<i>Brewer, Maine</i>	
3	CUST.	6-14-66	I-95-OVER W. BRANCH MATTAWAMKEAG RIVER	
5	S.H.C.	4-27-66	ISLAND FALLS, MAINE	
3	CUST.	4-20-66		
6	SHOP	4-20-66		
3	F.A.	4-7-66		
DRAWN 4-7-66 C.J.M.			CUSTOMER REED & REED	
			DESIGNER M.S.H.C.	
REVISION			ORDER VERBAL	
REVISION			DWG. B66-71-S4	
REVISION				

97-166



PLACE ANY NATURAL
CAMBER UP.



MATCH THIS END WITH
STRINGERS MARKED-S2

SHIP		BILL OF MATERIAL				DWG. B66-71-55
MARK	NO.	MARK	SHAPE	LENGTH	WT.	REMARKS
SIA	1		33WF130	53' 7 7/8"		A36
SIB	1			53' 3 3/8"		
SIC	1			53' 3 3/8"		
SID	1			53' 3 3/8"		
SIE	1			53' 3 3/8"		
SIF	1			53' 3 3/8"		
SIG	1		do	53' 7 7/8"		do
	24	P1	PL 6 x 3/8	2' 5"		A36
	6	P2	do	2' 5"		
	6	P3	do	2' 5"		
	14	P4	PL 18 1/2 x 1/2	2' 3"		
	28	P5	PL 4 x 3/4	3' 0 1/2"		
	14	P6	PL 11 x 1/4	3' 0 1/2"		do
	14	SHOP	3/8" H.S. BOLT	0' 3"		A325 WEB SPLICE PL
	56	SHOP	do	0' 3 1/2"		do FLANGE "
	70	SHOP	3/8" H.S. WASHER			
FIELD	372		3/8" H.S. BOLT	0' 3"		A325
	do		do	0' 3 1/2"		do
	do		3/8" H.S. WASHER			
	do		3/8" H.S. BOLT	0' 2"		
	do		3/8" WASHERS			

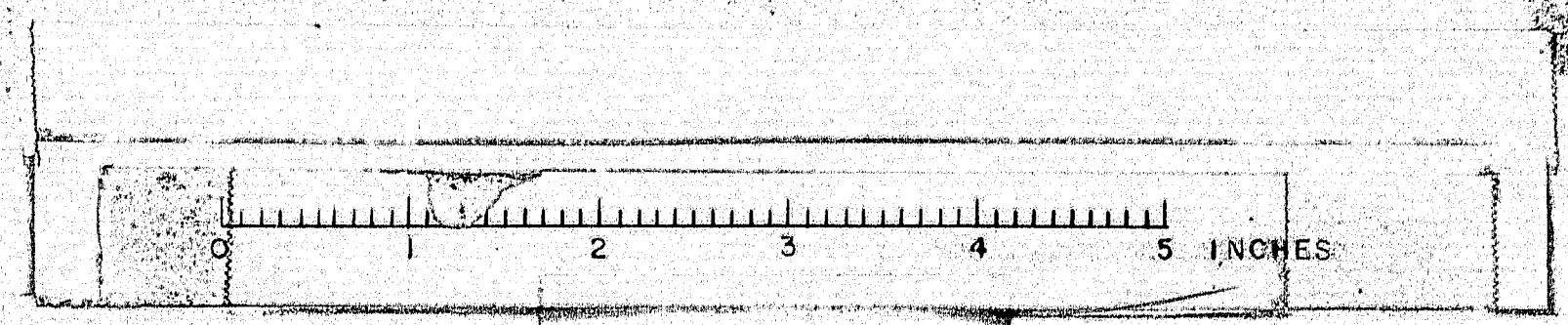
SHOP CONNECTIONS: WELD E-70 LOW-HYDROGEN
FIELD CONNECTIONS: 3/8" H.S. BOLTS
HOLES: 15/16" U.N.
PAINT: STATE OF SPEC'S.

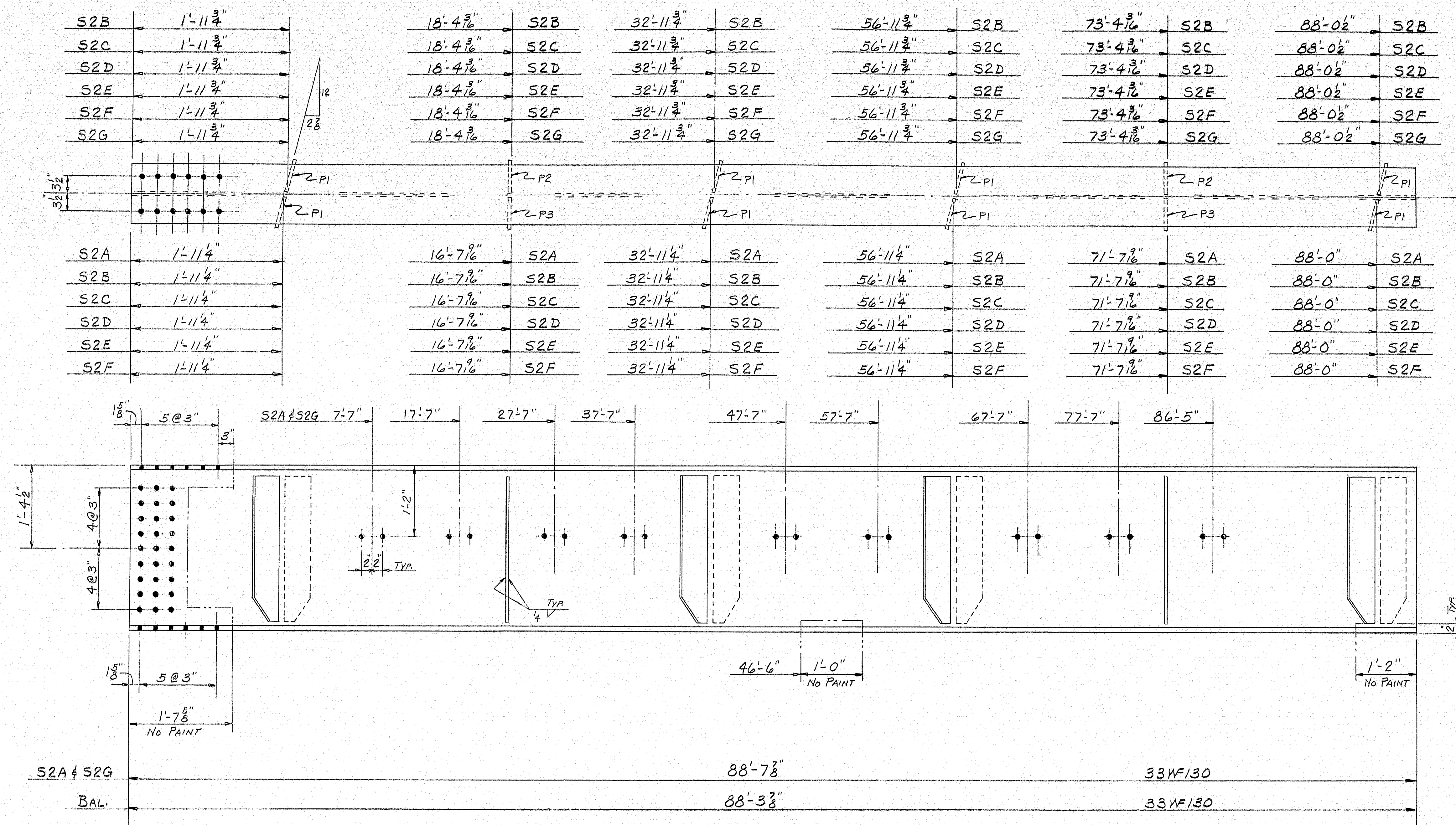
APP. 4-27-66 PROJ. NO. I-95-9(37) 272

STRINGERS SPAN #1

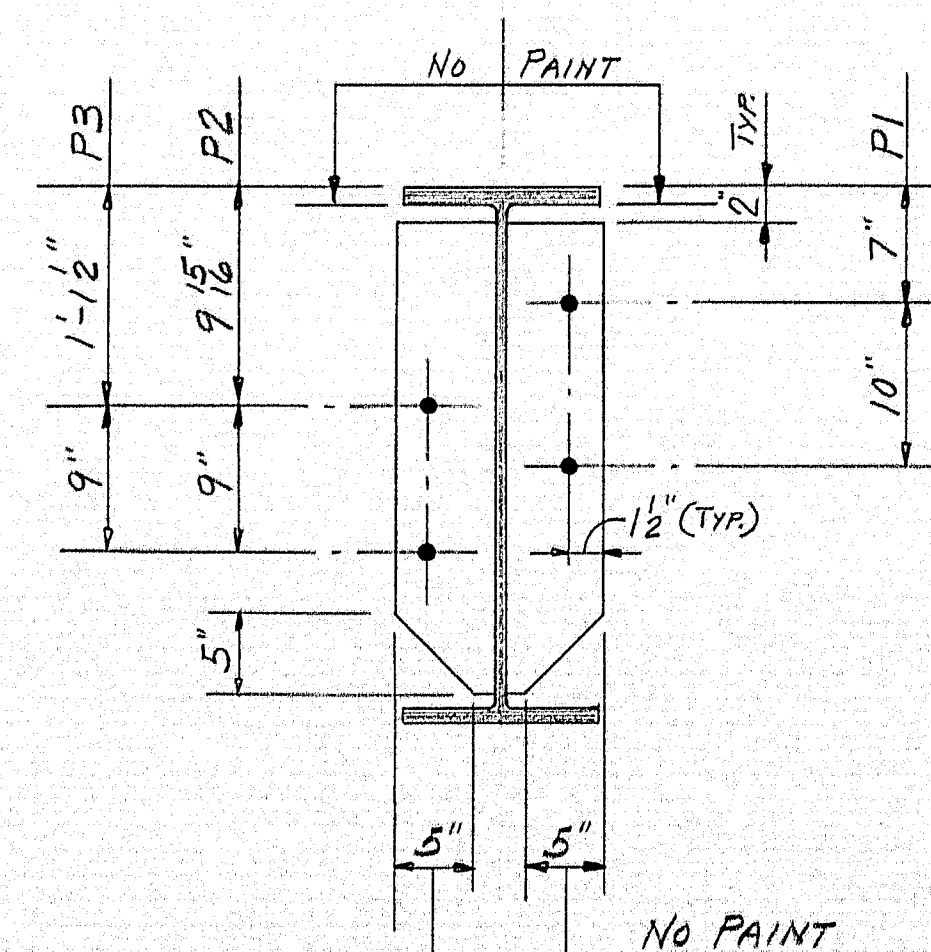
PRINT ISSUE		Bancroft & Martin Inc.	
3	CUST.	7-12-66	Brewer, Maine
6	SHOP	7-7-66	
5	S.H.C.	4-27-66	I-95 OVER W. BRANCH MATTAUKEAG RIVER
3	CUST.	4-27-66	ISLAND FALLS, MAINE
6	SHOP	4-27-66	
3	F.A.	4-18-66	
DRAWN	4-13-66 C.J.M.		CUSTOMER REED & REED
REVISION			DESIGNER M.S.H.C.
REVISION			ORDER VERBAL
REVISION			DWG. B66-71-55

97-167





ONE EACH
S2A-S2B-S2C-S2D-S2E-S2F-S2G



PLACE ANY NATURAL
CAMBER UP.

MATCH THIS END WITH
STRINGERS MARKED-S1

SHIP		BILL OF MATERIAL				DWG. B66-71-S6
MARK	NO.	MARK	SHAPE	LENGTH	WT.	REMARKS
S2A	1		33WF130	88' 7 7/8"		A36
S2B	1			88' 3 3/8"		
S2C	1			88' 3 3/8"		
S2D	1			88' 3 3/8"		
S2E	1			88' 3 3/8"		
S2F	1			88' 3 3/8"		
S2G	1		33WF130	88' 7 7/8"		do
	48	P1	26 x 3/4	2 5		A36
	12	P2	do	2 5		1
	12	P3	do	2 5		do

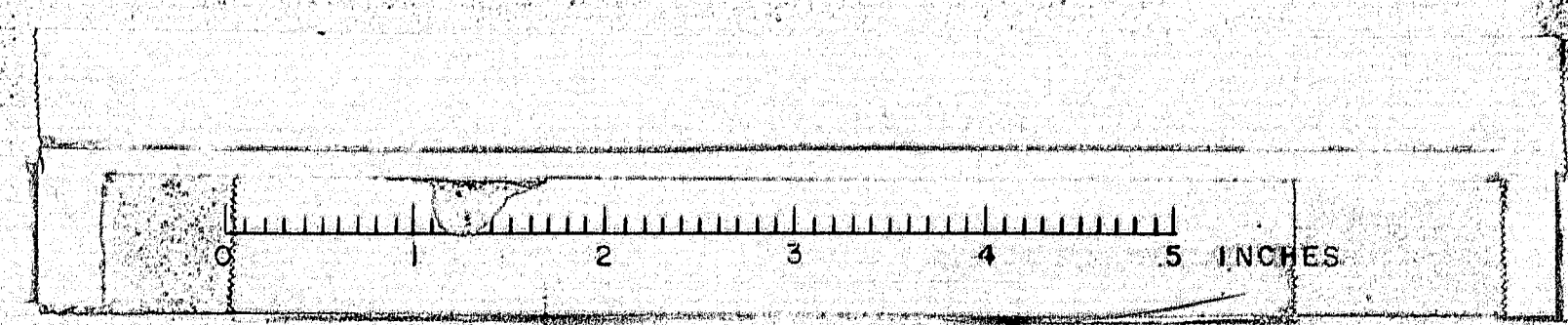
SHOP CONNECTIONS: WELD E-70 LOW-HYDROGEN
FIELD CONNECTIONS: 3/4" H.S. BOLTS
HOLES: 15/16" U.N.
PAINT: STATE OF MAINE SPEC'S.

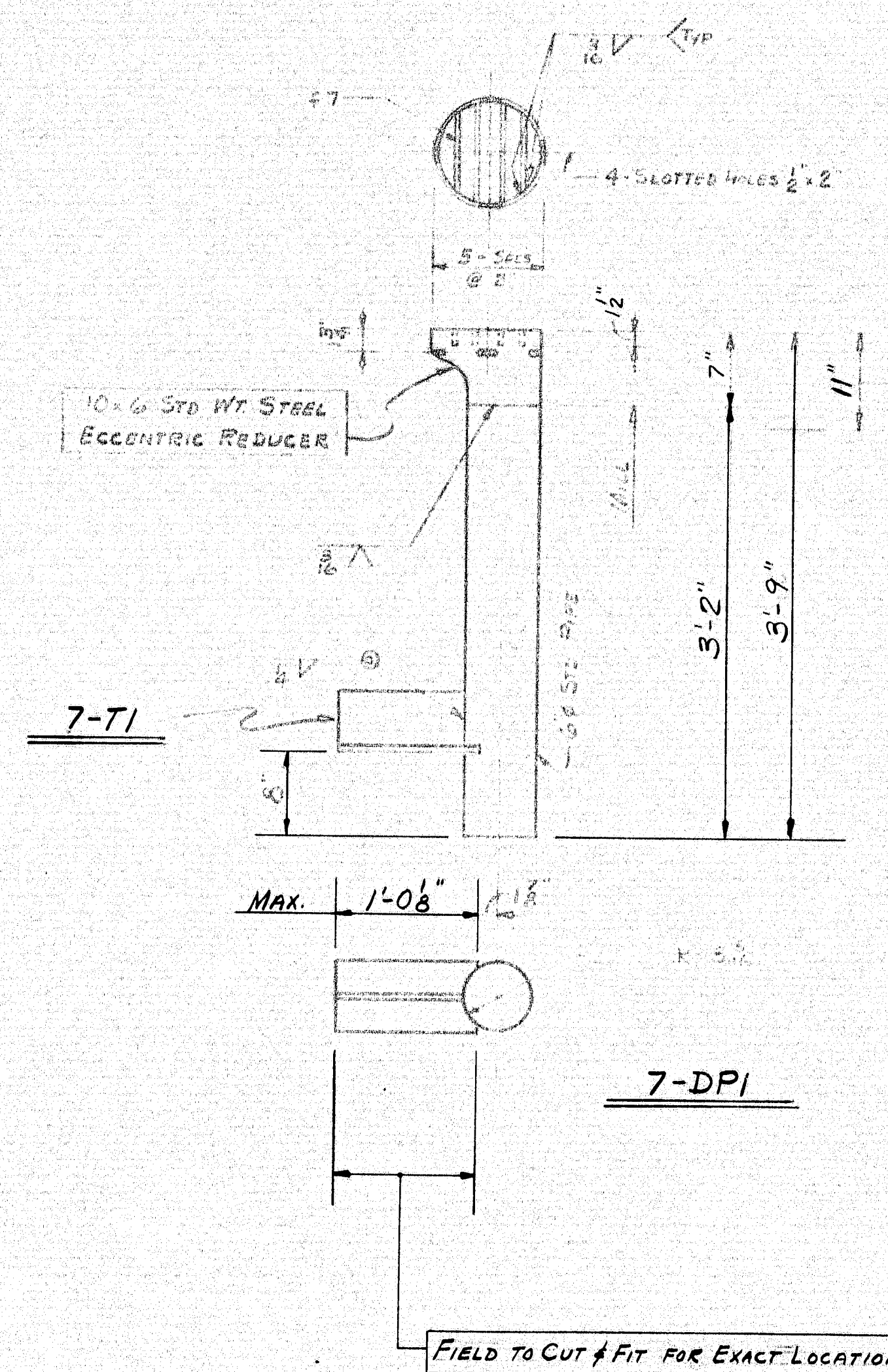
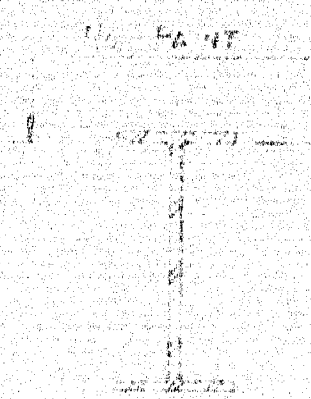
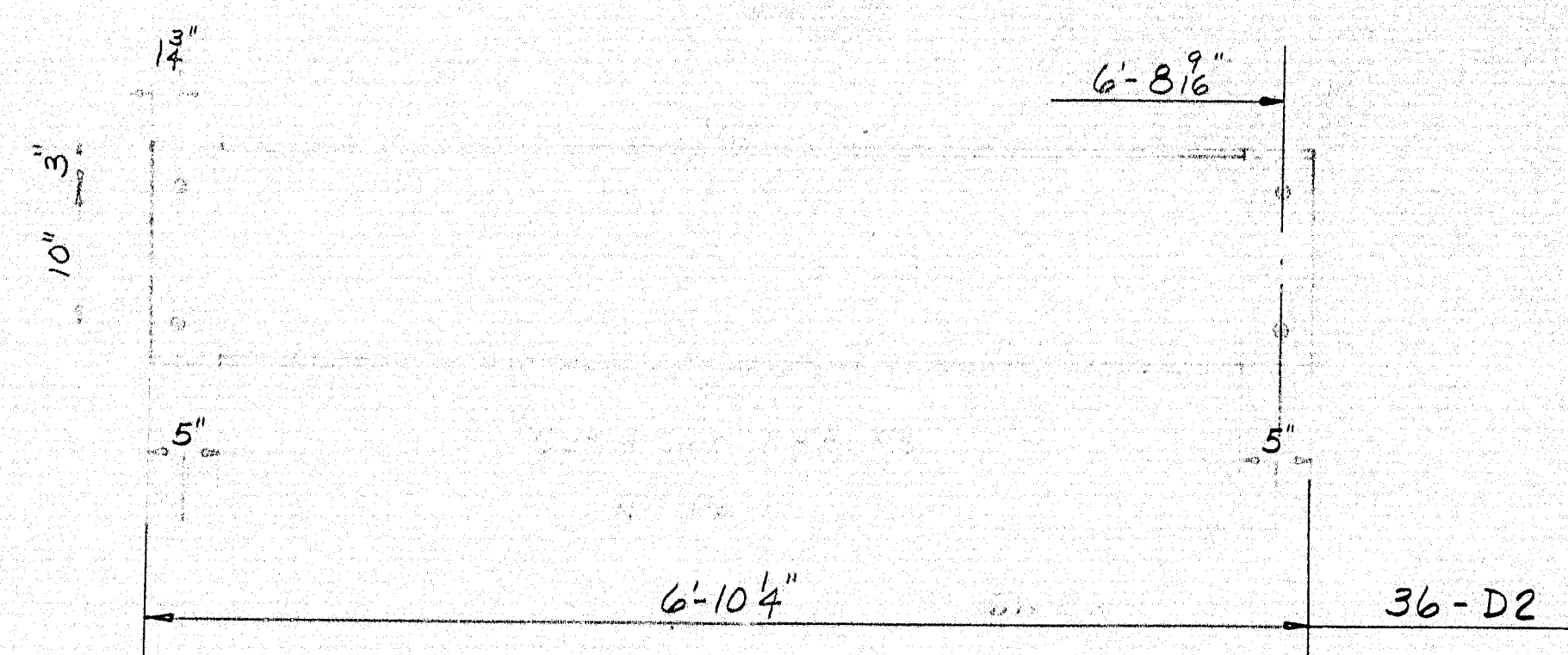
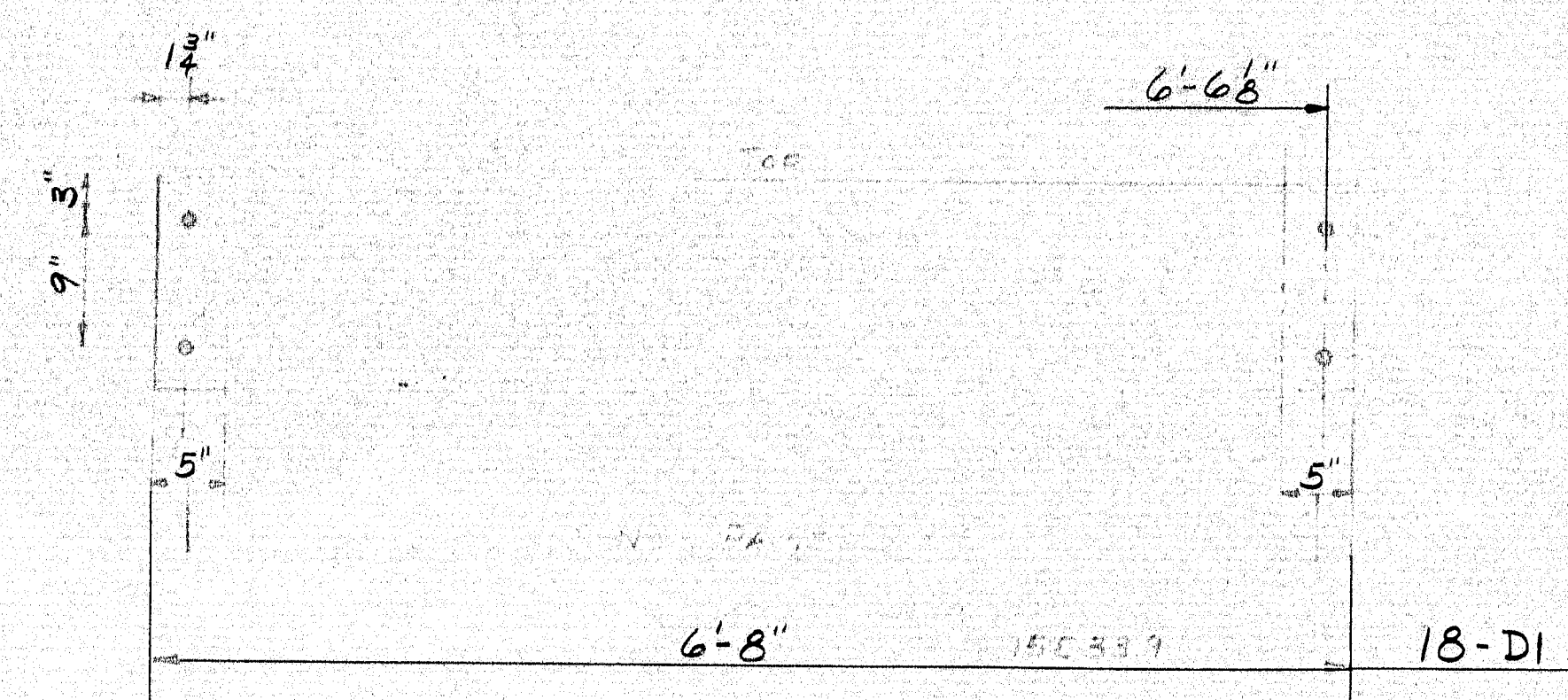
APR 4-27-66 PROJ. NO. I-95-9(37)272

STRINGERS SPAN #2

PRINT ISSUE			Bancroft & Martin Inc.	
3	CUST.	7-12-66	Brewer, Maine	
6	SHOP	7-7-66	I-95 OVER W. BRANCH MATTANAMKEAG RIVER	
5	S.H.C.	4-27-66	ISLAND FALLS, MAINE	
3	CUST.	4-27-66	CUSTOMER REED & REED	
6	SHOP	4-27-66	DESIGNER M.S.H.C.	
3	F.A.	4-18-66	ORDER VERBAL	
DRAWN	4-15-66	C.J.M.	DWG. B66-71-S6	
REVISION				
REVISION				
REVISION				

97-168





SHIP		BILL OF MATERIAL				DWG. B66-71-57
MARK	NO.	MARK	SHAPE	LENGTH	WT.	REMARKS
D1	18		15C33.9	6	8	A36
D2	36		16WF36	6	10 1/4	
DPI	7		6 STD PIPE	3	2	MIE A120
	7		10x6 STD STEEL ECCENTRIC REDUCER			REQ. Do
T1	7		576W13.5	1	0 1/8	A36
	28	f7	FB.12x2	0	10	CUT TO FIT

SHOP CONNECTIONS: WELD (E-70 LOW HYDROGEN)
 FIELD CONNECTIONS: BOLT & WELD
 HOLES: 1/8" UNLESS NOTED
 PAINT: STATE OF MAINE SPECS.

FROM No. I-95-9(37)272

DIAPHRAGM & DRAIN PIPE			
PRINT ISSUE		Bancroft & Martin Inc.	
		Brewer, Maine	
3	CUST.	7-12-66	I-95 OVER W. BRANCH MATTAWAMKEAG RIVER
6	SH.P.	7-7-66	ISLAND FALLS, MAINE
5	SH.P.	4-27-66	
5	SH.P.	4-27-66	
6	SH.P.	4-27-66	
2	F.S.	4-18-66	
DRAWN	4-18-66	C.J.M.	CUSTOMER REED & REED
REVISION			DESIGNER STATE HIGHWAY COMMISSION
REVISION			ORDER VERBAL
REVISION			DWG. B66-71-57

97169